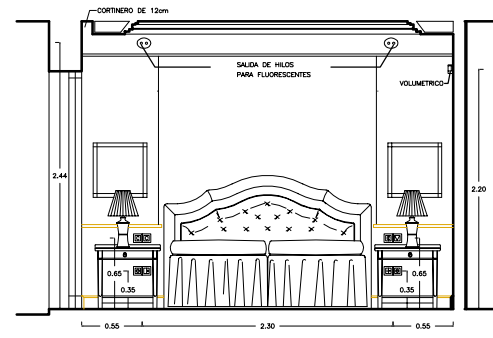


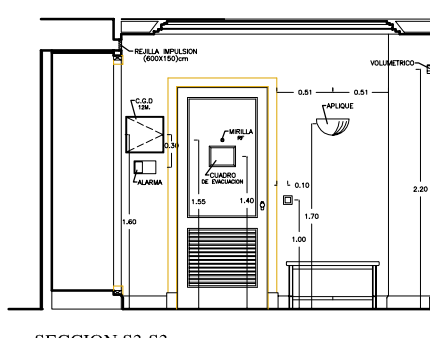
SECCION S1-S1, (SIN FRENTE DE CARPINTERIA)



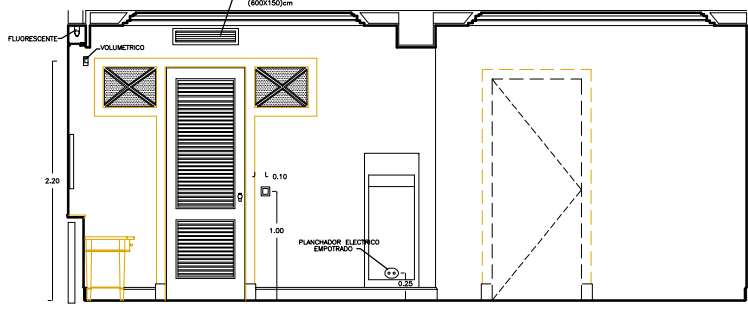
SECCION S1-S1, (CON FRENTE DE CARPINTERIA)



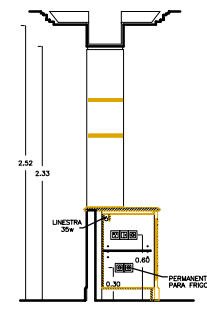
SECCION S2-S2



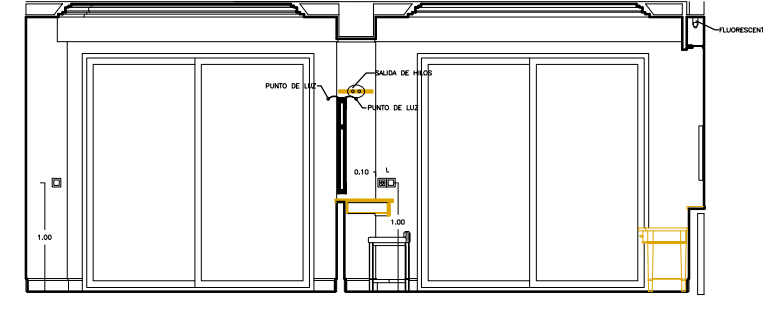
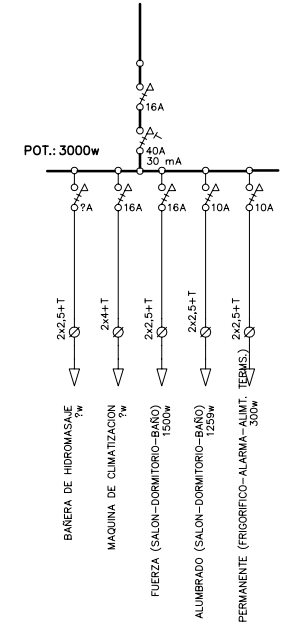
SECCION S3-S3



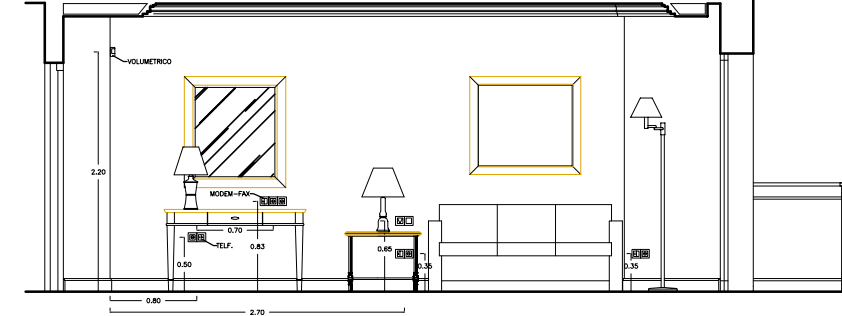
SECCION S4-S4



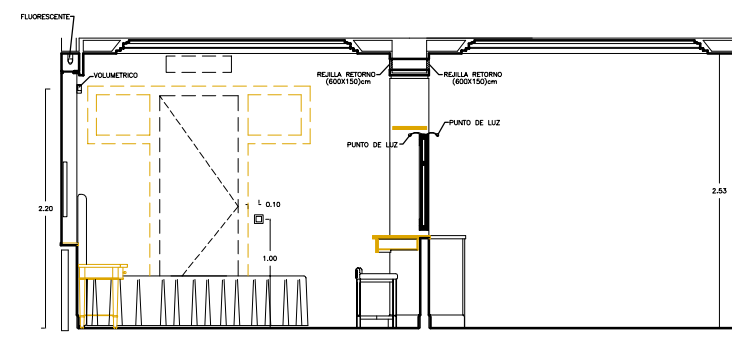
SECCION S5-S5



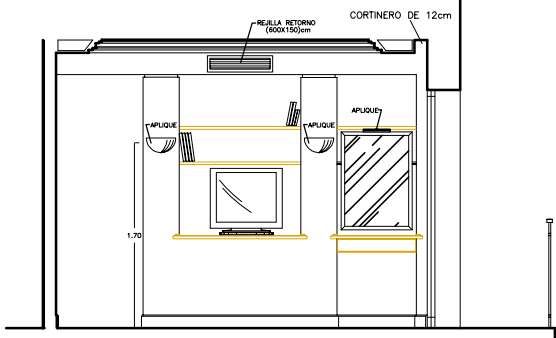
SECCION S6-S6



SECCION S7-S7

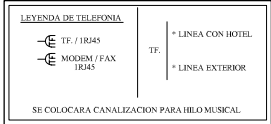
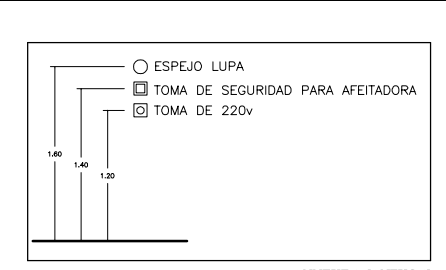
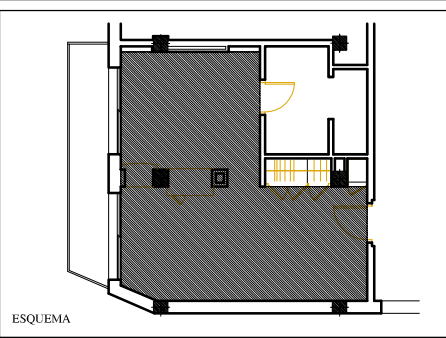


SECCION S8-S8

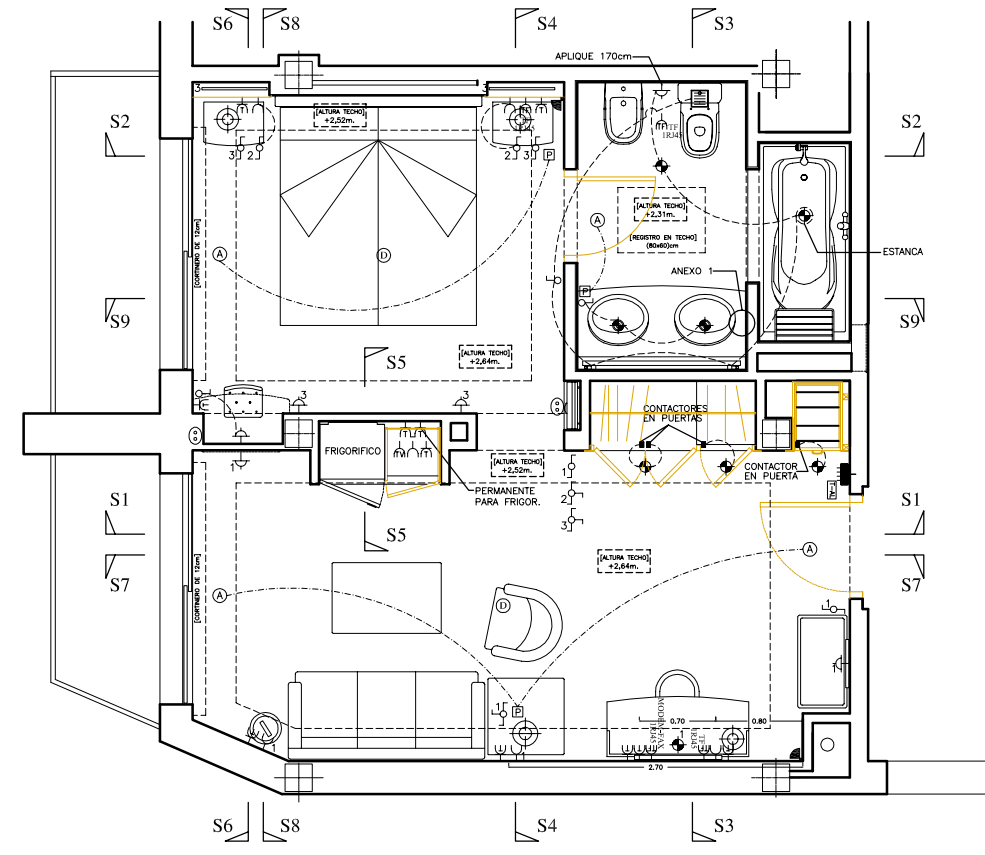


SECCION S9-S9

LEYENDA	
[Symbol]	AJA GENERAL DE DISTRIBUCION (C.G.D.)
[Symbol]	INTERRUPTOR UNIPOLAR
[Symbol]	INTERRUPTOR CONMUTADO
[Symbol]	INTERRUPTOR CONMUTADO DE CRUCE
[Symbol]	PUNTO DE LUZ EN PARED
[Symbol]	PUNTO DE LUZ HALOGENO ESTANCO, 35W/12v
[Symbol]	PUNTO DE LUZ HALOGENO, 35W/12v
[Symbol]	TOMA 10 AMPERIOS, (ALUMBRADO)
[Symbol]	SALIDA DE HILOS
[Symbol]	TOMA 16 AMPERIOS CON PUESTA A TIERRA
[Symbol]	TOMA TELEVISION Y RADIO
[Symbol]	TOMA TELEFONO
[Symbol]	POTENCIOMETRO ON/OFF [HILO MUSICAL], POR ESTANCIAS
[Symbol]	TUBO FLUORESCENTE DE 36w
[Symbol]	ALTAVOZ EMPOTRADO
[Symbol]	DETECTOR DE HUMOS ANALOGICO
[Symbol]	TECLADO DE ALARMA, CON DOS NIVELES [PRESENCIA Y APERTURA DE HUECOS]
[Symbol]	EXTRACTOR
[Symbol]	CONEXIONS BOX, [CAJA DE CONEXIONES]
[Symbol]	VOLUMETRICO, DETECTOR DE PRESENCIA [SISTEMA DE ALARMA]



NOTA: SE ENCUENTRA MARCADO LA UBICACION DEL THERMOSTATODE LA MAQUINA DE CLIMAT.



BREZO INSTALACIONES	PROYECTO :	HOTEL LOS ALAMOS TORREMOLINOS, [Málaga]	ESCALA :	SIN ESCALA
	DECORACION Y ARQUITECTURA DE INTERIOR	PLANO :	REFORMA DE HAB. 301, NUEVA SUITE JUNIOR ELECTRICIDAD	PLANO N°:
	CLIENTE :	PROPIEDAD	FECHA :	12/01/2000